



2017-2018 Budget

City Council Meeting
November 22, 2016

Where Does Your Property Tax Dollar Go?

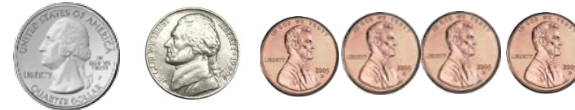
Property Tax Bill (2016-2017)



River Falls School District (40¢)



City of River Falls (Includes Tax Increment) (34¢)



Pierce and St. Croix Counties (21¢)



Chippewa Valley Technical College (4¢)



State (1¢)



What Does an Average Property Tax Bill in River Falls Look Like?

- Average Tax Bill - 2016
 - **\$3,724** (City Portion - \$1,003)
- Estimated Average Tax Bill -2017
 - **\$3,556** (City Portion - \$1,031)
 - *Estimated county levies, estimated state credits on \$180,000 value home in River Falls. Will vary by County or Residence.*

What Does an Average Property Tax Bill in River Falls Look Like?

- Pierce County Tax Bill - 2016
 - **\$4,008** (City Portion - \$1,197)
- Estimated Average Tax Bill -2017
 - **\$3,891** (City Portion - \$1,233)
- *Preliminary based on \$180,000 value home in River Falls.*

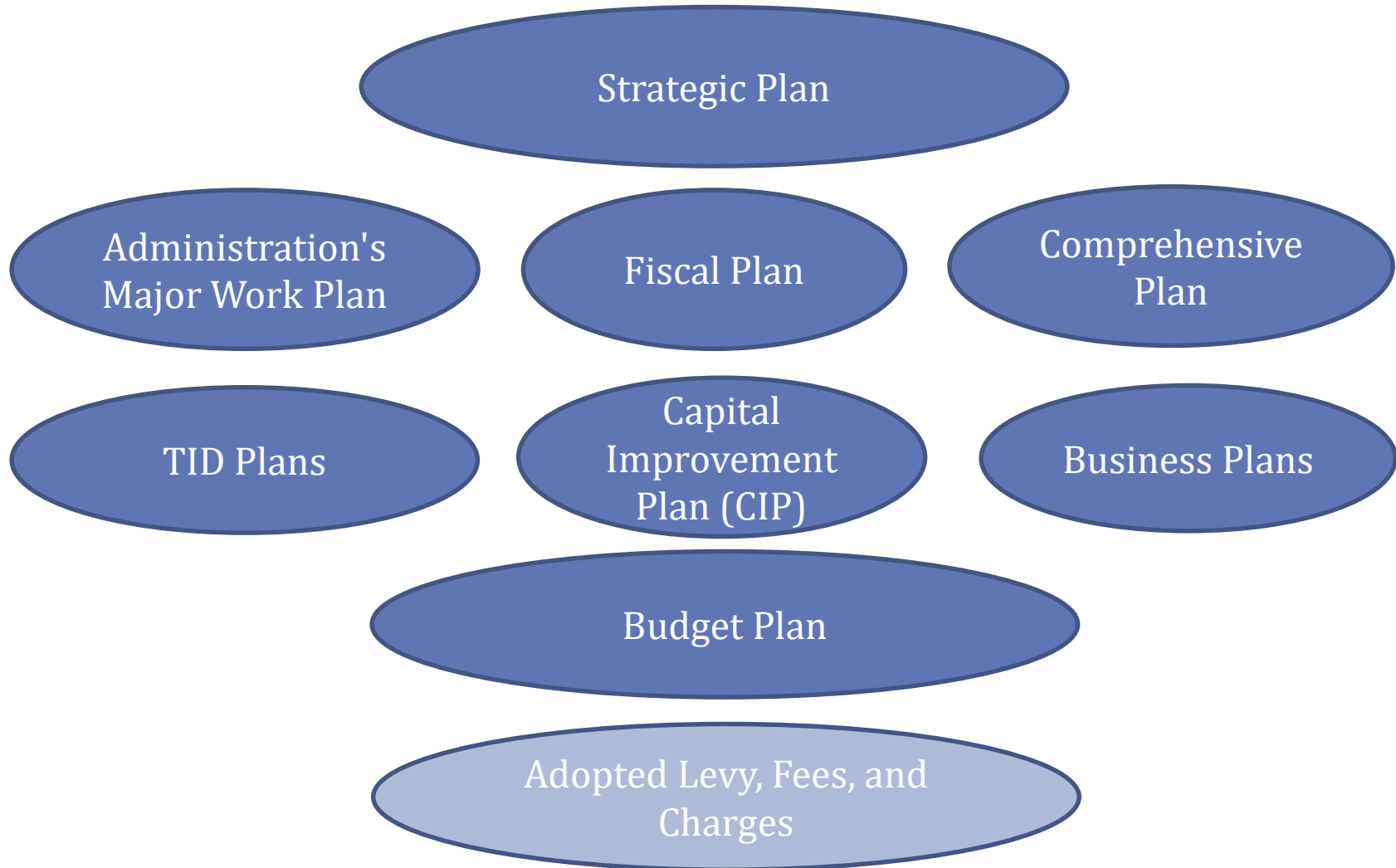
What Does an Average Property Tax Bill in River Falls Look Like?

- St. Croix County Tax Bill - 2016
 - **\$3,524** (City Portion - \$1,153)
- Estimated Average Tax Bill -2017
 - **\$3,568** (City Portion - \$1,243)
- *Preliminary based on \$180,000 value home in River Falls.*

How Is Property Tax Determined?

- Each Jurisdiction(School, County, City, State, College) determines the resources necessary to fulfill its mission.
- City of River Falls uses Strategic Plan to direct resources.
- Fiscal Plan is guide for fiscal resources.
- Budget Plan is the guide for 2-year period within the Fiscal Plan
- Budget Plan includes funding and staffing plan for all of the City's operations, including those using property tax dollars.
- Budget-in-Brief outlines key items in Budget Plan

Fiscal Planning & Implementation



What Action is Council taking?

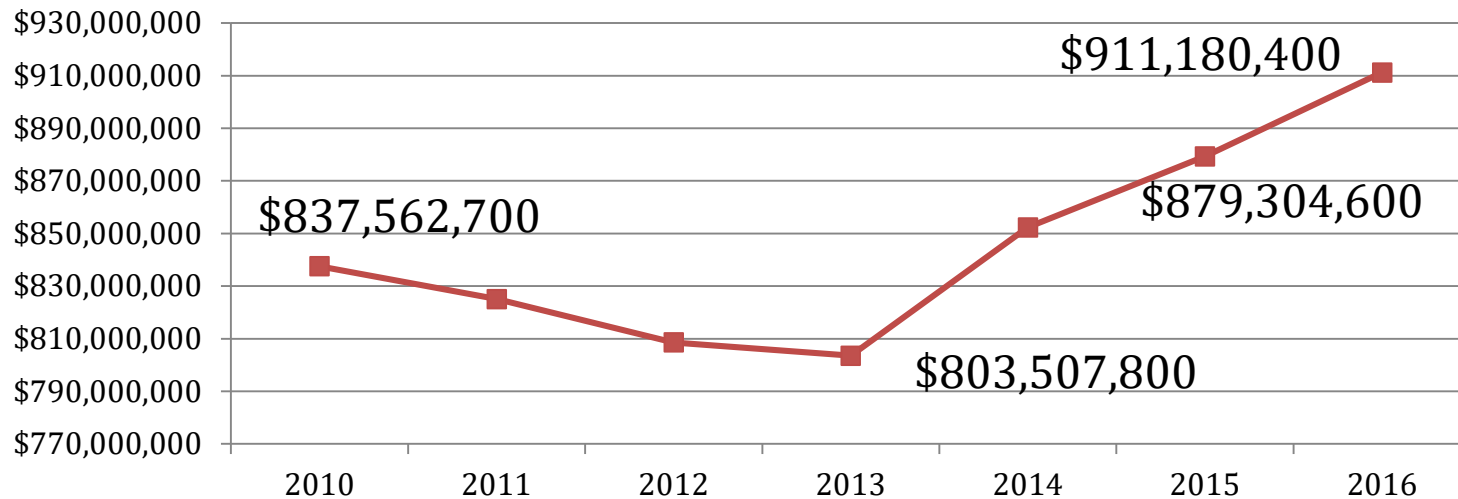
- Approving a 2-Year Budget Plan
 - \$83,000,000 Plan
 - Assumes adoption of second year of levy by separate action next year
 - Approving by Functional Area and Fund
 - Giving Authority to Staff to Implement Plan
- Approving Levy for 2016-2017
 - \$5,735,770 Levy
 - Authorizing the Levying of Taxes on Taxable Properties in River Falls

2017-2018 Budget Themes

- **Staffing**
 - Emphasis on Direct Service & Succession Planning
- **Continued Maintenance of Existing Infrastructure**
 - Streets, Forestry, Parks, Electric, Water
- **Major Projects & Efforts**
 - Glen Park Improvements
 - Kinni River Corridor Plan
 - Power Plant Substation
 - North Interceptor Sewer
 - Corporate Park Development
 - Community Development Efforts

Budget Highlights 2017-2018

- Overall, from 2015 to 2016, the City's equalized value increased by 3.6% or \$31.9 million



- Utility rates/service fees:
 - Planned 3% percent increase in storm water charges for 2017
 - Examine Electric rates for 2018
 - Implement a community recycling fee to allow all properties access the spring and fall cleanup, compost site and electronic recycling

Total 2017-2018 City Budget

2017-2018 City Budget
Total Budget: \$82,985,116

Enterprise Funds

\$44,391,188

General Fund

\$20,206,630

Special Revenue Funds

\$10,158,473

Capital Project Funds

\$3,724,588

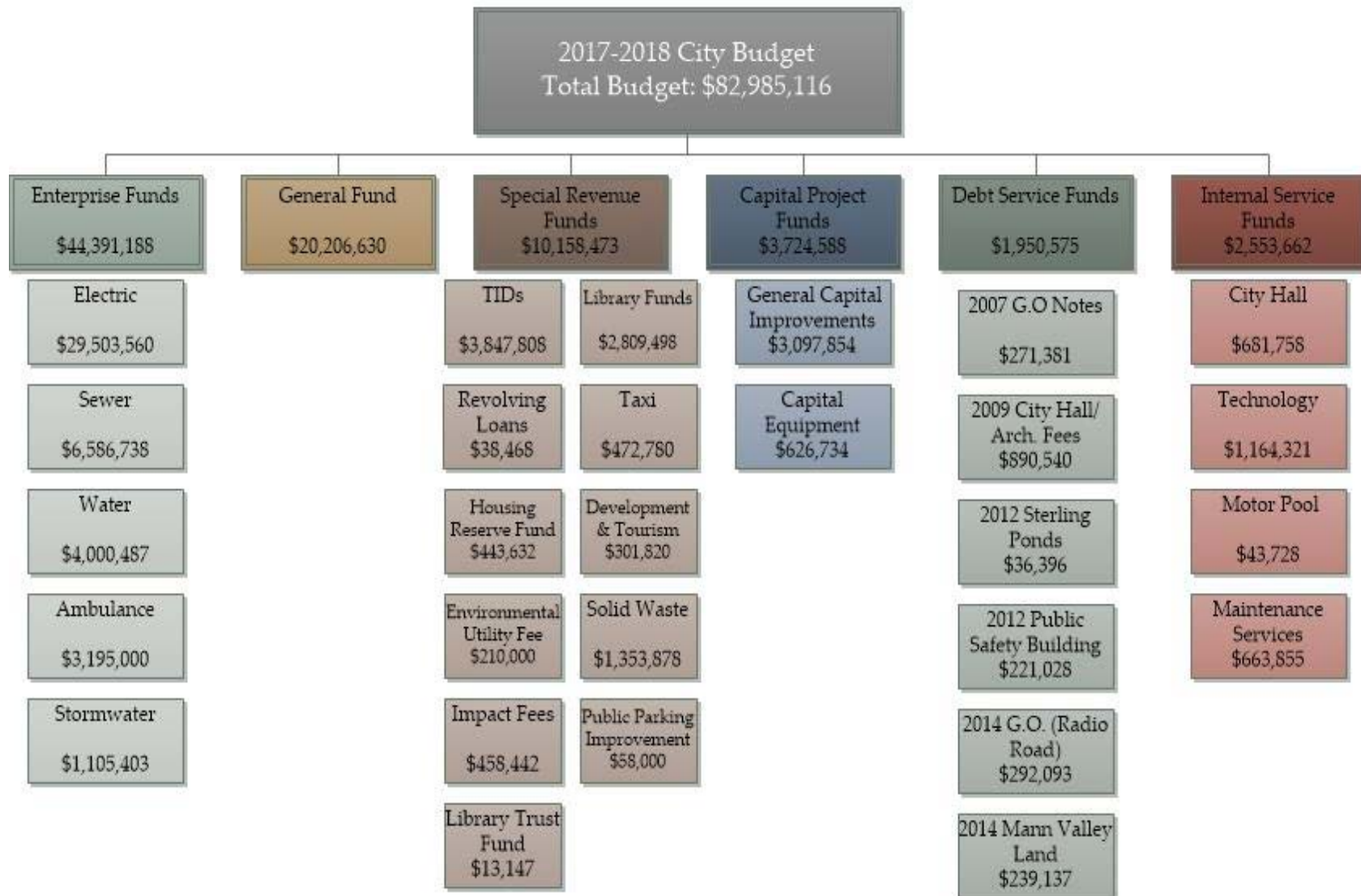
Debt Service Funds

\$1,950,575

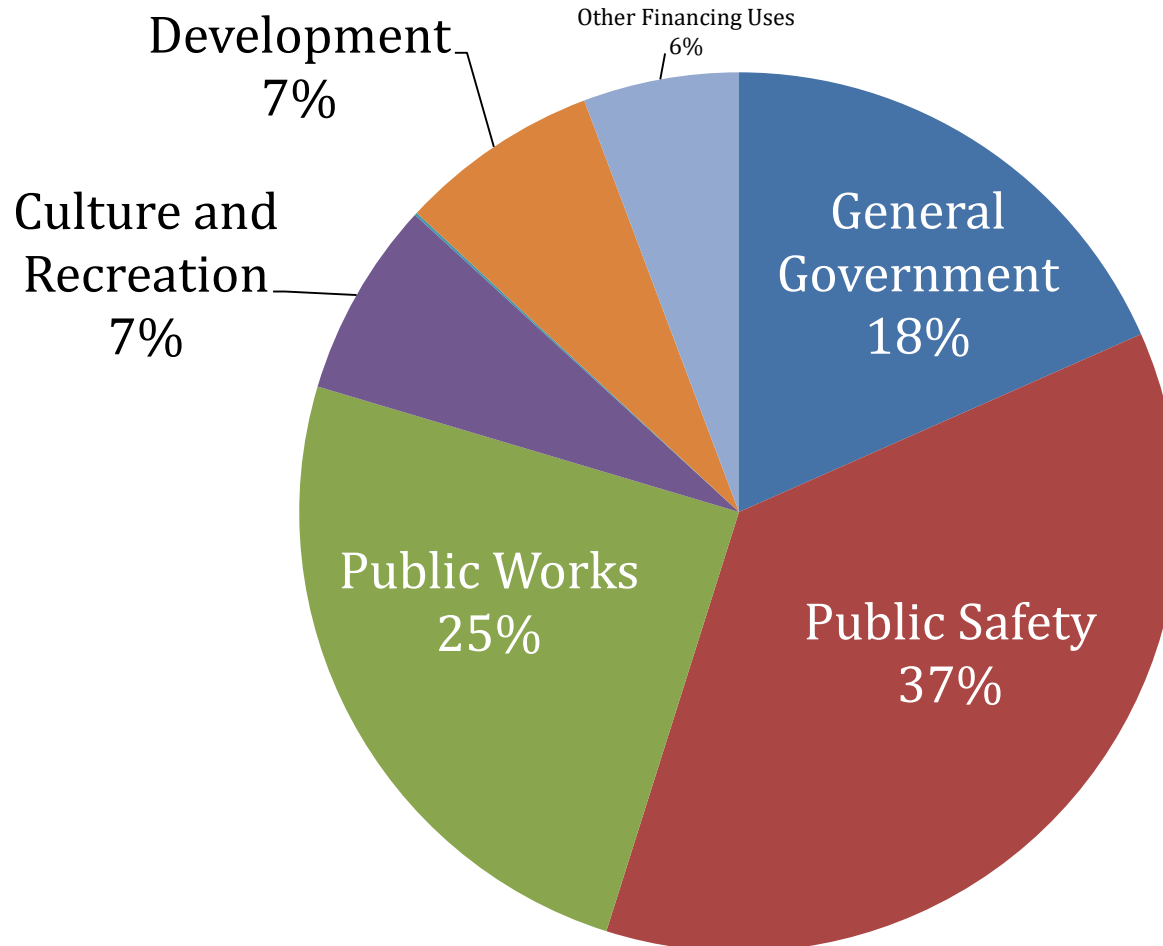
Internal Service Funds

\$2,553,662

Total 2017-2018 City Budget



2017-2018 General Fund



Major Capital Project Highlights

<u>Project</u>	<u>'17-'18 Budgeted</u>
Glen Park Plan Implementation	\$1,701,000
Power Plant Substation	\$1,750,000
Kinni Corridor Planning Effort	\$300,000
Planning Future Public Safety Facilities	\$575,000
Technology Investments	\$950,200
North Interceptor Sewer	\$3,874,100

Questions

The complete proposed 2017-2018 budget can be found:

- City of River Falls Website (www.rfcity.org)
- At City Hall (222 Lewis Street)
- At the River Falls Public Library (140 Union Street)

The City Council will hold a Public Hearing on the proposed budget on November 22, 2016 in the City Council Chambers.

For questions, contact Scot Simpson ssimpson@rfcity.org or Julie Bergstrom, jbergstrom@rfcity.org